



Keep fingers safe with
StormFlame Finger
Protection Products

StormFlame



www.stormflame.com



Finger Saver Front & Back

Prevents fingers being trapped in a gap between the frame and the rear edge of the door. Extremely durable and maintenance free. Impact resistant, 10 colours ex-stock. Fits most door types. Wipe clean finish.

Astro Finger Saver is a door safety accident prevention product that blocks the cavity formed between the edge of the door and door frame and prevents fingers entering the cavity by means of a folding finger safety device and also acts as a secondary draught excluder.

Once fitted it ensures that fingers are safe from painful finger trapping injuries. Finger Saver can be fitted to most types of doors including wood, metal and UPVC.

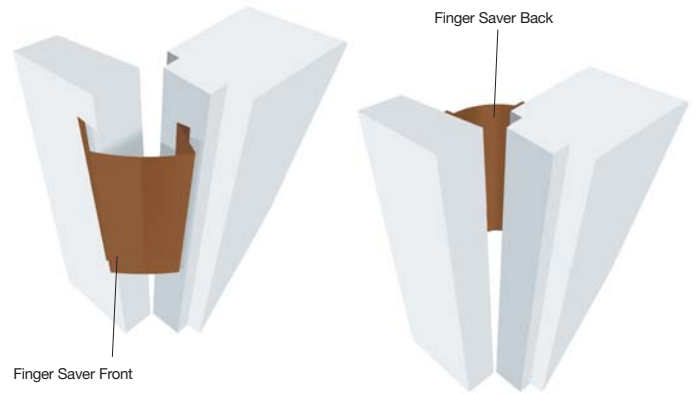
Extremely simple to install and has a long life expectancy and can be easily removed and refitted for door painting. Doors are used everyday by everybody but they are potentially dangerous and according to ROSPA there are over 30,000 finger injuries every year. Teachers, parents, and carers have become increasingly aware of the danger of children trapping their fingers in closing doors and to avoid accidents recent legislation BS7036 Part 4: item 7.1 recommends "the use of a Finger Saver that either fills the finger trap or minimises the gap so as not to create a finger trap."

A must for every Home, Commercial & Industrial Residence. For total protection from finger trapping injuries in doors purchase the Finger Saver set.

Size: 1980mm Ex-Stock, longer lengths P.O.A.

Availability: Brown, White, Red, Black, Cream, Grey, Blue, Teak, Beech and Beige.

Available to order in any quantity.



To Order & Specify

Please quote - Quantity/Trade name/Size/Colour/Product Ref

Typical wording - 10 / ASTRO FINGER SAVER / WHITE / AFFSAVV

Colour	Finger Saver Front	Finger Saver Back	Finger Saver Set
Brown	AFFSAVB	AFFSAVBH	AFFSAVBSET
White	AFFSAVV	AFFSAVWH	AFFSAVWSET
Red	AFFSAVR	AFFSAVRH	AFFSAVRSET
Black	AFFSAVBLK	AFFSAVBLKH	AFFSAVBLKSET
Cream	AFFSAVC	AFFSAVCH	AFFSAVCSET
Grey	AFFSAVG	AFFSAVGH	AFFSAVGSET
Blue	AFFSAVBLU	AFFSAVBLUH	AFFSAVBLUSET
Teak	AFFSAVTK	AFFSAVTKH	AFFSAVTKSET
Beech	AFFSAVBEE	AFFSAVBEEH	AFFSAVBEESET
Beige	AFFSAVBEI	AFFSAVBEIH	AFFSAVBEISET

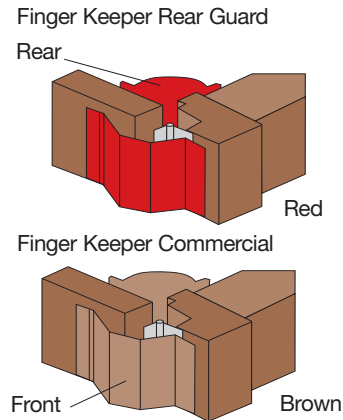


Finger Keeper Commercial & Finger Keeper Commercial Rearguard

Every year, according to ROSPA, over 30,000 children are injured in the UK as a result of trapping their fingers in doors. Finger Keeper is an accident prevention product. To prevent the trapping of fingers in doors and many types of external gates.

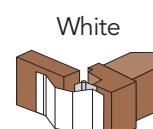
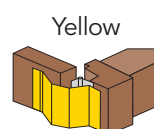
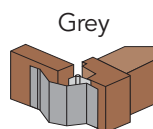
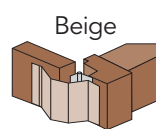
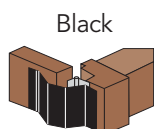
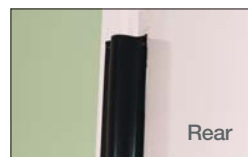
The Finger Keeper device prevents finger trapping accidents by totally covering the gap that is created on the hinge or the rear side of a door when it is in the open position. The devices can be fitted to most types of doors including wood, metal and UPVC, swing pivot and concertina type doors which open to 160 degrees.

The devices are considered to be neat and unobtrusive. The product is extremely simple to install and has a long life expectancy and can be easily removed and refitted, no glue or nails required. 10 colours available. Use rearguard in conjunction with the Finger Keeper, the risk of finger trapping accidents is totally eliminated, thus making your doors 100% safe. Finger Keeper and Finger Keeper rear hinge guard are manufactured in the EU, meeting the highest quality standard in compliance with ISO 9001:2000.



Finger Keeper Commercial & Rearguard Sizes 1960mm

Colour	Finger Keeper	FK Rear Guard	FK Set Both Sides
White	AFFKWH	AFFKWHH	AFFKWHSET
Brown	AFFKBR	AFFKBRH	AFFKBRSET
Red	AFFKRED	AFFKREDH	AFFKREDSET
Black	AFFKBLK	AFFKBLKH	AFFKBLKSET
Beige	AFFKBEI	AFFKBEIH	AFFKBEISET
Grey	AFFKGR	AFFKGRH	AFFKGRSET
Yellow	AFFKYELL	AFFKYELLH	AFFKYELLSET
Blue	AFFKBLU	AFFKBLUH	AFFKBLUSET
Teak	AFFKTK	AFFKTKH	AFFKTKSET
Beech	AFFKBEE	AFFKBEEH	AFFKBEESET



Teak and Beech not illustrated - Phone for samples.

StormFlame

Finger Keeper Industrial

- Particularly targeted at creches, pre-schools, nurseries, schools, colleges, hotels, restaurants, residential homes or any facility open to the public.
- Use Astro Finger Keeper Industrial to create the safest working environment and avoid potentially costly and disruptive injuries.
- Universal - will suit left or right hand opening doors, also suitable for fire doors.

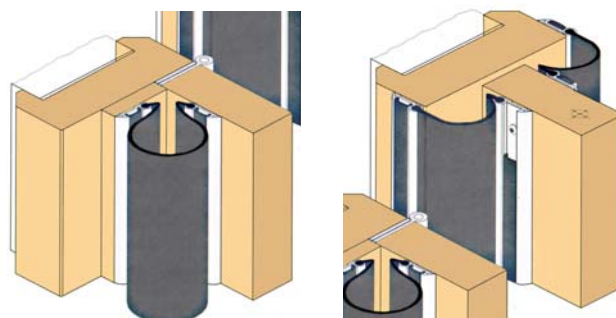
Anti Finger Jamb: A rubber EPDM safety strip which prevents fingers being jammed on the hinge side of a door. It is fixed to the door and the jamb on the hinged side. Ideal for heavy robust uses.

Location: Butt hinged or centre pivot door

Seal Lengths: 2100mm

Standard Finish: Anodised Satin Clear holder. Black EPDM rubber seal.

Fixing Method: Zinc plated, cross recess head S.T. screws of the appropriate size are supplied. Fixing holes are slotted. Push-in cover strip.



Item	Colour	Code	Size
Finger Keeper Industrial	Aluminium	AFFKIND	2100mm

StormFlame

Finger Defender

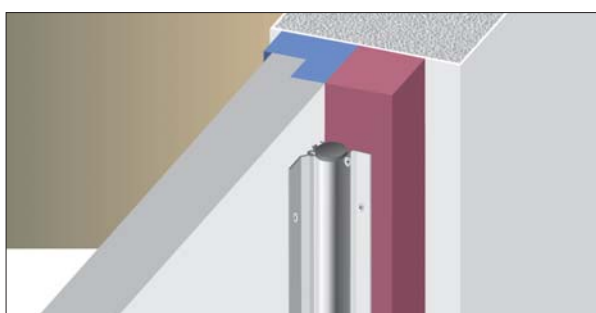
Prevents fingers being trapped in a gap between the frame and the rear edge of door. Acts as a light door closing mechanism. Extremely durable and maintenance free. Tested to over 1 million open & closing cycles. Fits any door up to 180° opening. Impact resistant, Colour coated to any RAL number or wood grain effect is also available.

Doors are used everyday by everybody but they are potentially dangerous and according to ROSPA there are over 30,000 finger injuries every year. Teachers, parents, and carers have become increasingly aware of the danger of children trapping their fingers in closing doors and to avoid accidents recent legislation BS7036 Part 4: item 7.1 recommends "the use of a finger defender that either fills the finger trap or minimises the gap so as not to create a finger trap. Astro Finger Defender is a high quality, resilient blind that prevents fingers entering the cavity formed between the edge of the door and door frame. The blind is mounted in a robust aluminium housing unlike a concertina style blind, which is constantly exposed and can suffer damage as a result.

Colours: Silver Anodised Finish, Dark Bronze or White
Colour coated to any Ral Colour

Lengths: 1925mm

Availability: to order in any quantity.



To Order & Specify

Please quote - Quantity/Trade name/Size/Colour/Product Ref
Typical wording - 10 / ASTRO FINGER DEFENDER / SAF / AFFDEFSAF

Please quote - Quantity/Trade name/Size/Colour/ Product Ref
Typical wording - 10 / ASTRO FINGER DEFENDER / COLOUR RAL 8109 / AFFDEFCOL

Test Reports Tested to over 1 million open & closing cycles

Item	Colour	Code	Size
Finger Defender	Silver	AFFDEFSAF	1925mm
Finger Defender	Dark Bronze	AFFDEFDB	1925mm
Finger Defender	White	AFFDEFWHT	1925mm
Finger Defender	Colour	AFFDEFCOL	1925mm

StormFlame

Finger Protecta

- Extremely durable and maintenance free
- Tested to over 1 million open & closing cycles
- Fits any door up to 180° opening
- Suitable for Automatic Doors
- Suitable for most single or double-action doors

Astro Finger Protecta is a high quality, resilient blind that prevents fingers entering the cavity formed between the edge of the door and door frame. The blind is mounted in a robust aluminium housing unlike a concertina style blind, which is constantly exposed and can suffer damage as a result. A robust housing protects Astro Finger Protecta when not in use. Independently tested to over 1 million opening & closing cycles and prevents fingers entering the cavity formed between the door and the frame by means of an inflammable blind, which opens and closes with the action of the door.

Colours: Silver Anodised Finish, Dark Bronze or White

Lengths: 1925mm

Availability: to order in any quantity.



To Order & Specify

Please quote - Quantity/Trade name/Size/Colour/Product Ref
Typical wording - 10 / ASTRO FINGER PROTECTA / SAF / AFFPROSAF

Item	Colour	Code	Size
Finger Protecta	SAA Silver	AFFPROSAF	1925mm
Finger Protecta	Dark Bronze	AFFPRODB	1925mm
Finger Protecta	White	AFFPROWHT	1925mm

We are also specialist suppliers of Intumescent Fire Protection Products
Anti-Graffiti Paints, Draught & Weather Seals and Fire Proof Paints.
Contact us on 01329 841416 for our latest brochures or view www.stormflame.com



Fire Protection Products.

Intumescent passive fire protection products include - fire seals, smoke seals, fire grilles, downlighter covers, pipe collars, fire rated sealants, mastics and adhesive filler foams. Range includes acoustically tested fire seals.



Anti-Graffiti. Don't let them get away with it!

Clear Anti-graffiti paint and a graffiti removal system.



Remember to fit draught and weather seals for a dryer and warmer home.

We carry an extensive range of general purpose, dry glazing, perimeter seals, sliding sash and threshold seals by Astrodraft, Schlegel and Raven.



Fire Proof Paints. A protective barrier that looks good too.

We can supply a full range of intumescent paints and coatings for situations where a decorative or protective paint finish also has to possess fireproof, fire resistant or flame retardant properties.

Ordering Online @ www.stormflame.com. You can buy all of the products from the StormFlame Group online at our shop using Secure Card Payments via WorldPay™. Customers who do not have a credit card, or do not want to enter card information on the internet, can create a priced shopping list and email, fax or post it to us. Or you can order over the phone.

StormFlame

Stormflame Ltd, Unit 9, The I.O. Centre
Stephenson Road, Segensworth
Fareham, England PO15 5RU
Tel 01329 841 416 Fax 01329 841 417
Email sales@stormflame.com

www.stormflame.com